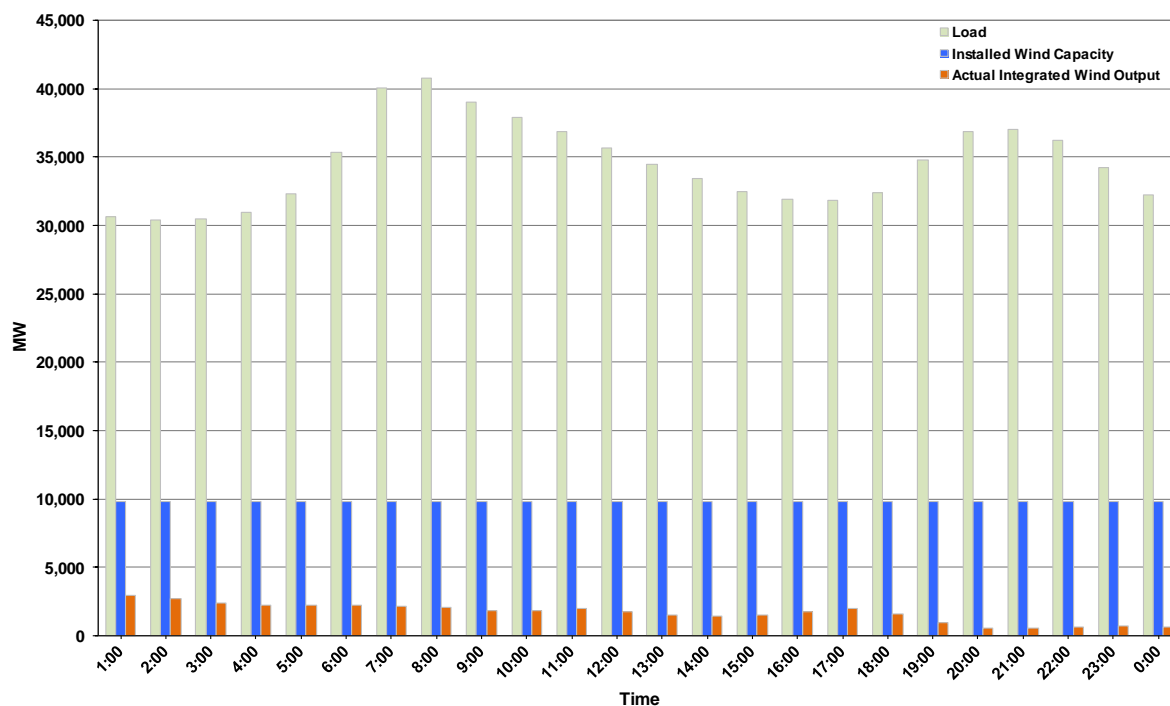




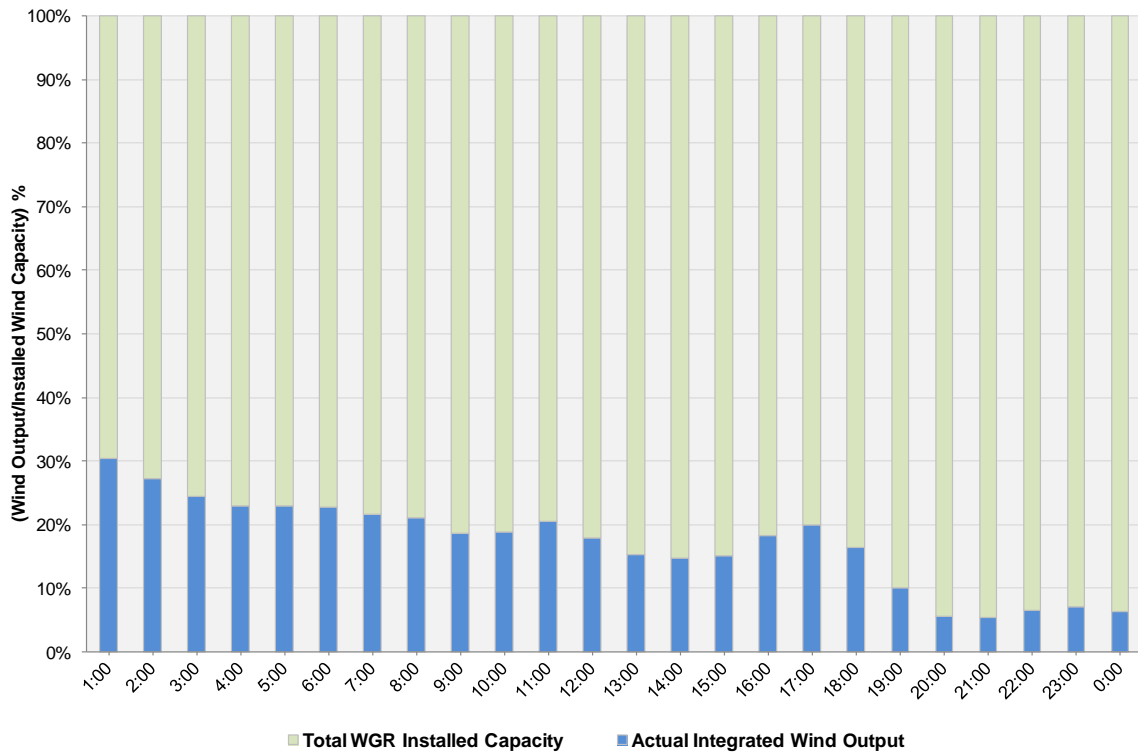
ERCOT Grid Operations Wind Integration Report: 02/28/2013

Peak Load	40,754 MW
Load Peak Hour (HE)	08
Wind over Peak	2,072 MW
Wind Record 02/09/13	9,481 MW
Max Wind Value	3,125 MW
Wind Peak Time	00:01
Wind Integration %	10.05%

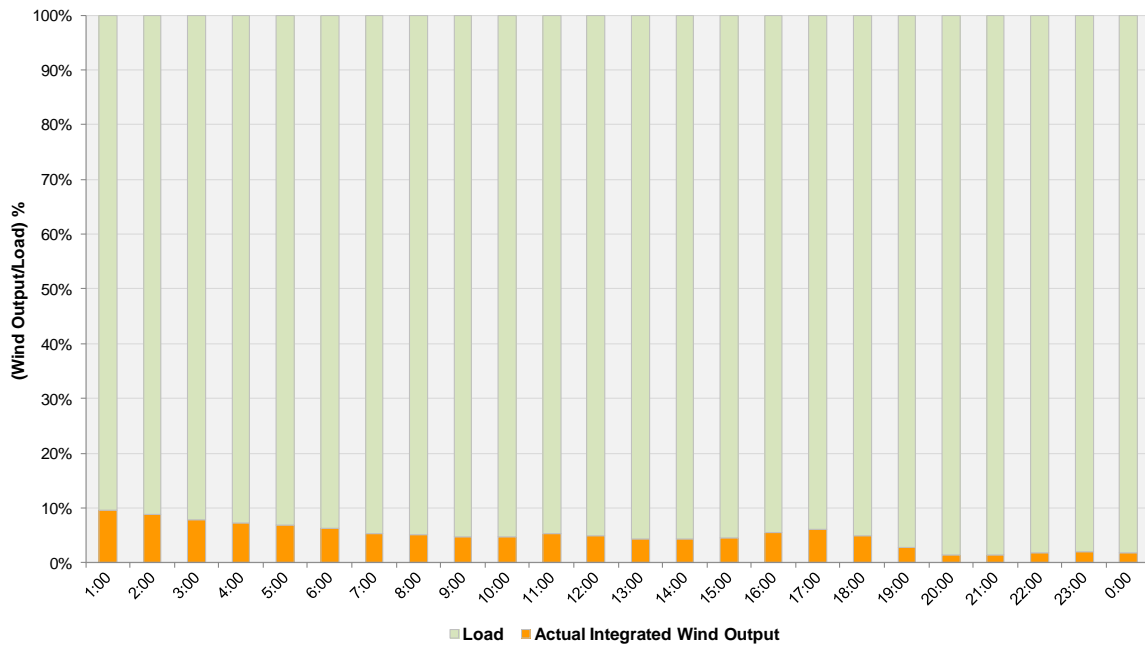
**Hourly Average Actual Load vs. Actual Wind Output
02-28-2013**



Actual Wind Output as a Percentage of the Total Installed Wind Capacity
02-28-2013



Actual Wind Output as a Percentage of the ERCOT Load
02-28-2013



ERCOT Load vs. Actual Wind Output 2/21/2013 - 2/28/2013

